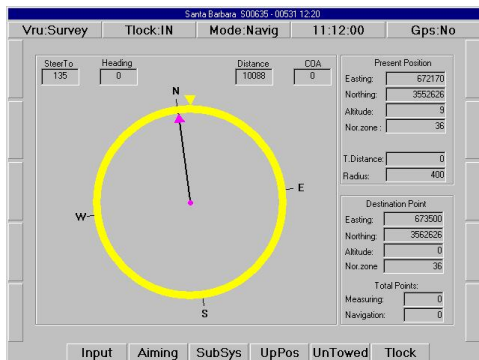
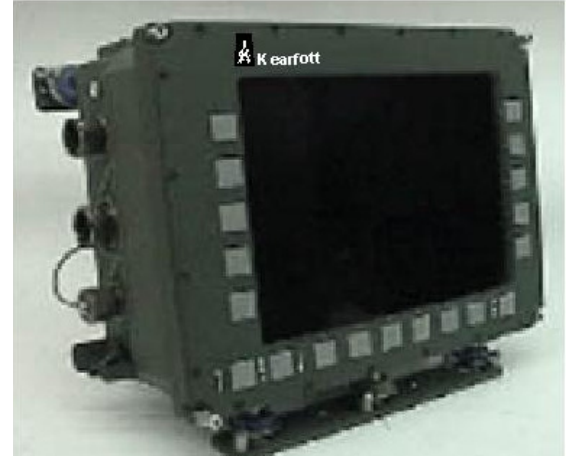


**6" x 8" CONTROL AND DISPLAY UNIT (CDU)**

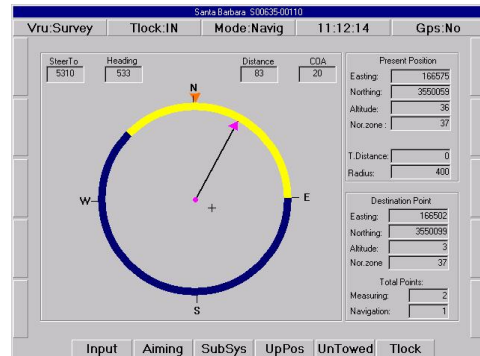
Kearfott's Active Matrix Liquid Crystal Display (AMLCD) Control and Display Units (CDUs) have been designed, tested, and produced to meet the highest military standards. Specially designed for use by ground forces in tanks, artillery and armored vehicles. Kearfott's CDUs can be modified or tailored to satisfy system needs.

Kearfott's robust 6" x 8" CDU has a high-resolution display with excellent contrast, and capability to display graphics or motion video (CCD or FLIR), readable from direct sunlight to night mode operation.

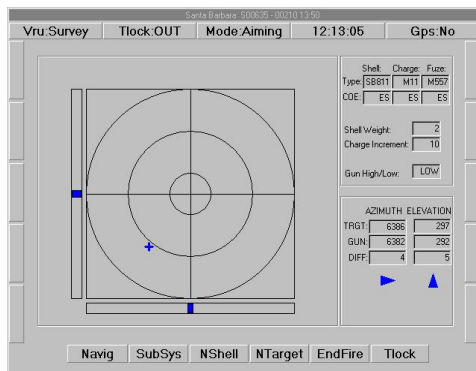
The two main functions of the CDU are to assist the battlefield commander to navigate to the firing point destination, and aim the weapon to the targets. Typical navigation and aiming screens are shown below.



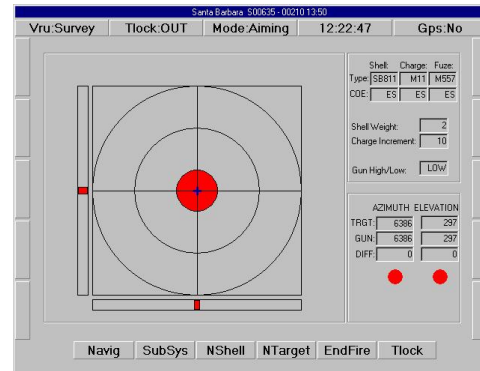
**Navigation Mode – Far Display**



**Navigation Mode – Near Display**



**Fine Calculated Aiming Screen**



**Calculated Aiming Bullseye Screen**

## **Features:**

- High resolution, high brightness display, viewable in 10,000 fL (foot-lambert) ambient.
- CDU luminance maximum brightness of at least 150 fL
- Embedded processor supporting digital map and navigation or fire control applications.
- Motion video, FLIR and color graphics support.
- Automatic or manual brightness control.
- MIL-qualified.
- Low power consumption.
- Designed to withstand severe environmental conditions, without external cooling or fan.
- Modularized for maintainability - all modules, including AMLCD replaceable without adjustment.

<b>Technology:</b>	AMLCD
<b>Display Size:</b>	8.3" x 6.2"
<b>Physical Size (W x H x D):</b>	11.8" x 9.0" x 5.0"
<b>Weight :</b>	16 lbs maximum
<b>Power, Typical:</b>	28 V dc, 66 W (without heaters)
<b>Brightness, Typical:</b>	180 fL (foot-lambert) Full sunlight readability
<b>Contrast Ratio:</b>	5:1, typical @ 10,000 FC (foot-candle) ambient
<b>Shades of Color:</b>	64 Shades per primary color or 256K colors
<b>Resolution:</b>	640 x 480, 600 x 800 optional
<b>Viewing Angle:</b>	±45° Horizontal +30° , -15° Vertical
<b>Aspect Ratio:</b>	4:3
<b>Inputs:</b>	- Eight (8) channels of RS-422/RS-232 - PC keyboard, mouse and ethernet interface - PAL/NTSC color video input (optional), FLIR video supported - video output (optional)
<b>MTBF:</b>	> 7,500 hrs, ground mobile environment at 20°C
<b>Embedded CPU:</b>	Pentium based
<b>Bezel Mounted Panel Keys:</b>	16 membrane style buttons, plus brightness up/down control, and shift (each button backlit)
<b>Temperature:</b>	-30°C to +55°C (Operating), -40°C to +71°C (Non-Operating)
<b>Options:</b>	- Touch screen - Detachable keypad - VGA video input - Multiple video inputs - Detachable hard drive
<b>Environmental Requirements</b>	Per MIL-STD-810E
<b>Electromagnetic Compatibility</b>	Per MIL-STD-461C

***For further product information or additional applications, please contact  
Kearfott Marketing at (973) 785-6555 or Fax (973) 785-5905 or  
Visit our Website @ [www.kearfott.com](http://www.kearfott.com)***