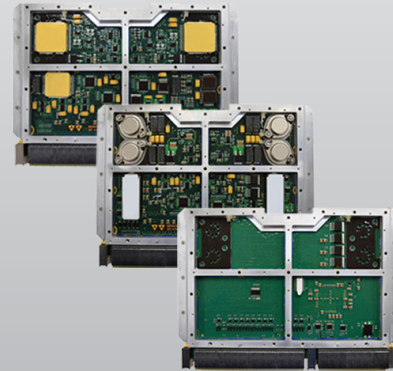
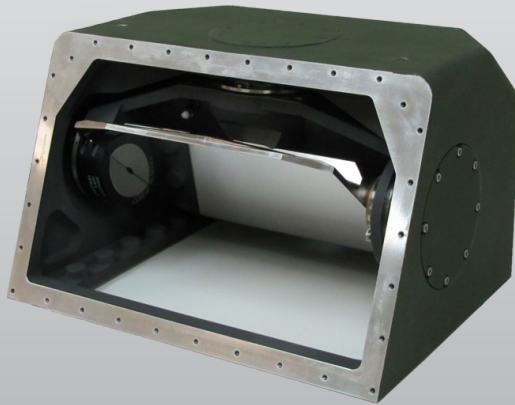


Compact Modular Sight

Line-of-Sight Stabilization



Shot-to-Shot Accuracy for High Fire Rate Weapons

Kearfott's Compact Modular Sight (CMS) Inertially Stabilized Line-of-Sight system is a key element of the fire control system used on the Littoral Combat Ship and other turret applications.

The CMS provides turret reticle stabilization in the presence of harsh environments, improving situational awareness and keeping rounds on target. The CMS was designed to stabilize rapid-fire weapons with minimal shot-to-shot walk off of the sight reticle. The inertial stabilization mode is built on Kearfott's proven CONEX® gyro technology and utilizes advanced control algorithms to maximize sight stability.

Features & Benefits

- ✓ Best-in-Class On-the-Move Sight Stability in Battlefield Environments
- ✓ Stabilizes Rapid-Fire Weapons With Minimal Shot-to-Shot Walk Off
- ✓ Utilizes Advanced Control Algorithms to Maximize Sight Stability

CMS Product Specifications

<i>Physical Characteristics</i>	
Overall Dimensions	8.7 in H x 11 in D x 14.4 in W (22.09 cm H x 27.94 cm D x 36.57 cm W)
Mirror Dimensions	9.5 in x 8 in (24.13 cm x 20.32 cm)
Weight	53 lbs (24.04 kg)
Power	24 VDC, 150 W (max)
LOS Excursion	Elevation: +32.5° to -34.5° Azimuth: +5° to -5°
<i>Performance Capabilities</i>	
Ambient Stabilization	< 2 μ rad (1 σ)
On-the-Move Stabilization	< 40 μ rad (1 σ)
Built-in-Test Coverage	Fault Detection: 95% Fault Detection: 90%
Tracking Rate Capability	Elevation: 1100 mils/sec Azimuth: 1100 mils/sec